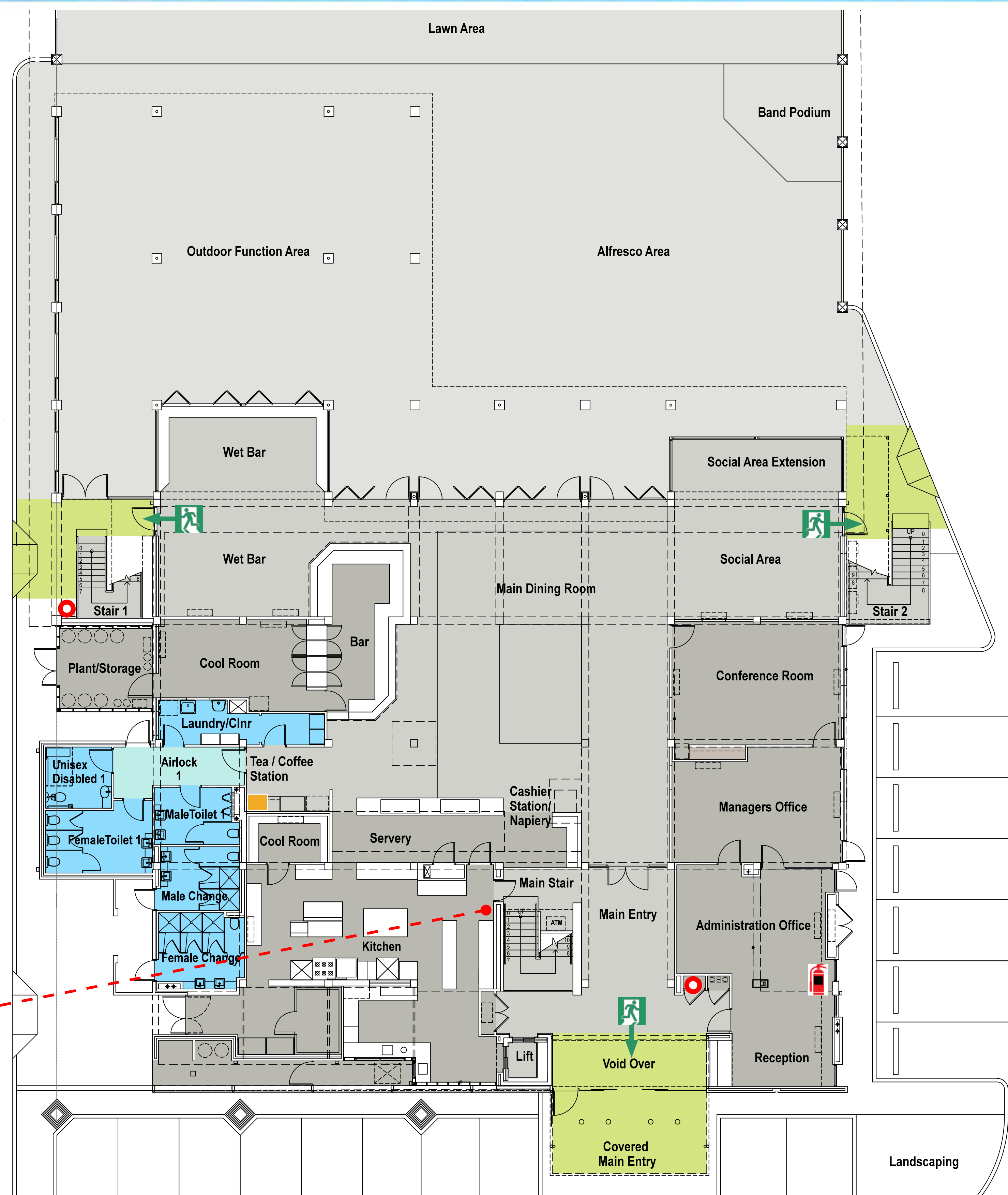


EVACUATION DIAGRAM



GAS STOP

SWAN YACHT CLUB GROUND FLOOR

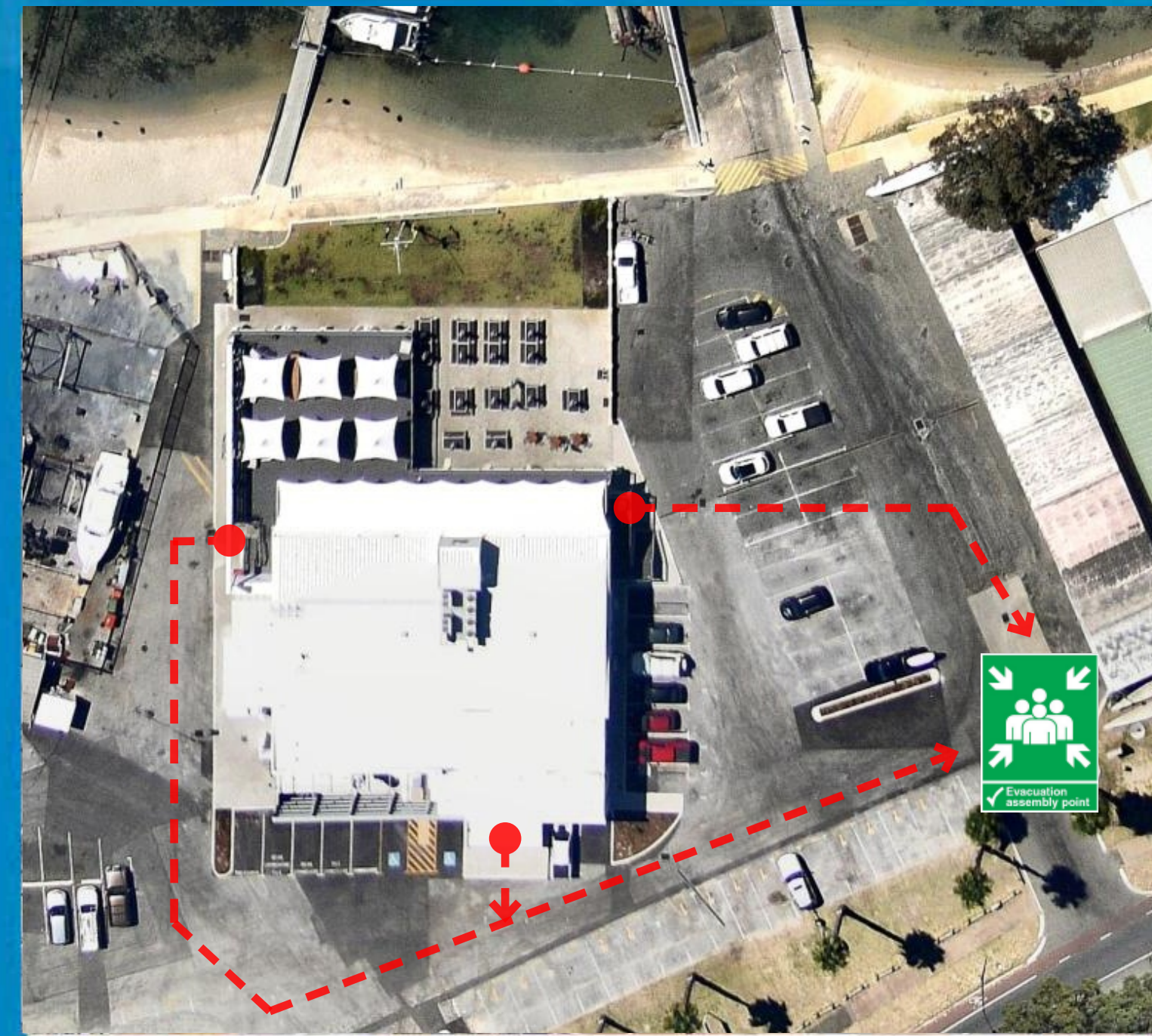
LEGEND	
	ABE POWDER
	CO2
	WET CHEMICAL
	FIRE BLANKET
	FIRE HOSE REEL
	DEFIBRILLATOR
	EXIT ROUTE
	ASSEMBLY AREA

For All
Emergency
Services
Dial **000**

P Police

Fire

Ambulance



AT THE ASSEMBLY AREA

- Account for people from the building.
- Report any person missing to the Emergency Services.
- DO NOT re-enter the site until authorised by the Emergency Services.



EMERGENCY PROCEDURES

- I**
ISOLATE the source of the problem. Shut doors, switch off gas or electricity or secure yourself away from an intruder; rescue injured persons if safe to do so. In the event of a fire attempt to extinguish, if trained and safe to do so.
- C**
CONTAIN the threat and **CORDON** off the area if safe to do so. Alert people in immediate area and prevent others from entering the hazardous zone. Shut down airconditioning systems.
- E**
EVACUATE the area via the nearest safe exit if your safety is at risk. Stay calm, do not run.
- R**
RAISE the alarm for the premise. Contact the Chief Warden, phone 000 for Emergency Services.

